



TekTrack

Packaging tracking made Smart. Simple. Secure.



Tomorrow's Solutions... Today.



Maximize efficiency. Minimize errors. Increase accountability. Enhance productivity. Automate operations. In today's business environment, these are a few requirements that companies are faced with to successfully meet their tracking demands. TekTrack® is the complete solution to these demands, making tracking easier than ever before.



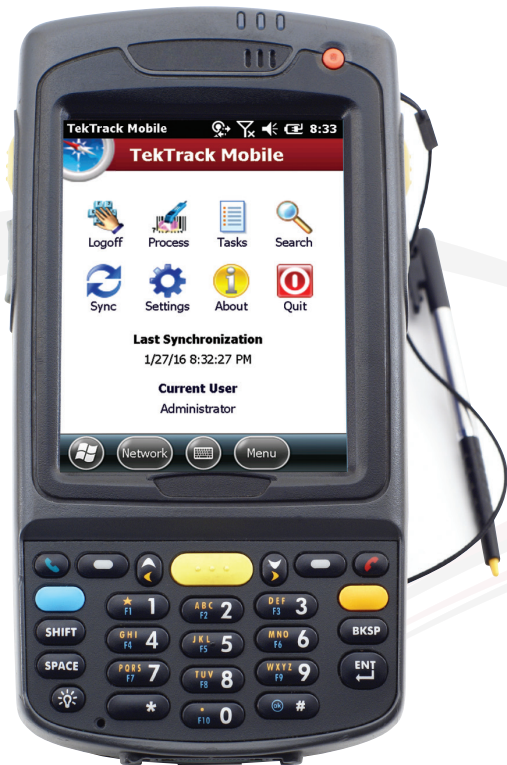
Tracking Made Easy

TekTrack is an easy-to-use tracking system designed to meet all of your inbound tracking demands. Never waste time and money searching for a lost package again. With TekTrack, you can feel confident about where your packages are at all times. TekTrack frees you from error-prone manual tracking while automating daily tracking operations to maximize your efficiency. To make your job even easier, TekTrack offers an unmatched number of robust features including alerts, notifications, and our own SmartScan™ technology.

Access Anywhere... Anytime

TekTrack is an enterprise solution designed to utilize your existing corporate network and resources efficiently. Whether you need tracking for a single office or multiple facilities around the world, TekTrack was designed to expand seamlessly with your organization's needs. TekTrack provides convenient access anytime or anywhere, allowing users in your organization to track and monitor assets from any networked computer.





Mobile Integration

For increased speed and mobility, TekTrack provides full integration with mobile scanners and PDCs (portable data collectors). You have the flexibility to use your mobile devices in remote offline mode or wirelessly to send immediate delivery updates. TekTrack works seamlessly with Windows hand-held devices to obtain electronic signatures for proof-of-delivery as well as capturing photographic images for damaged asset reports.

Enhanced Efficiency

Nothing makes a tracking system more valuable than one that is designed to get the job done right the first time. TekTrack allows you to save time by shaping the tracking process and user experience to your organization's needs. It automates redundant operations, allows multiple assets to be updated simultaneously, and supports multiple types of notifications (email, text messaging, web, alerts, and many others).

Advanced Security

In today's technology age, protecting your company's electronic assets is extremely critical. TekTrack's advanced security protects against unwanted network access and attacks, utilizes data encryption, and provides secure client and server communications. Additionally, you can refine access control for your organization's members through the assignment of user and group permissions.

Increase Accountability

Whether processing several assets a day or thousands, TekTrack lets you track in real-time. As an asset travels through your organization, you can find when it arrived, where it is, and when it is delivered... instantly. You can even provide non-system users with secure access to monitor specific packages within your tracking system.

TekTrack® is the key to your organization's tracking **SUCCESS**

Saves time

User friendly & easy to learn

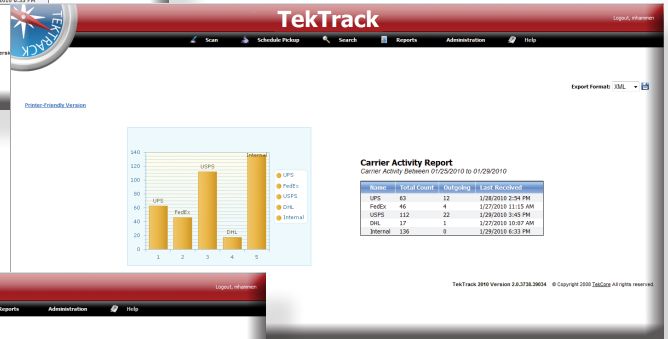
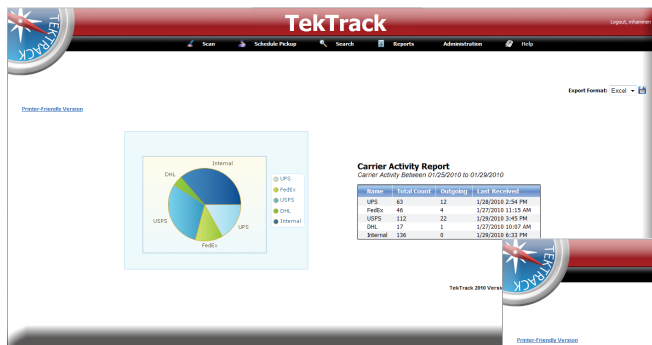
Centralized deployment & storage

Convenient access from anywhere

Enhance productivity

Strengthened security

Scalable



Search <ul style="list-style-type: none"> Basic or advanced search options. Save searches for later use. 	Reports <ul style="list-style-type: none"> Run an existing report. Add, edit, or delete reports. 	Alerts <ul style="list-style-type: none"> View existing asset alerts. View existing location alerts. Add, edit, or delete alerts.
Schedule a Pickup <ul style="list-style-type: none"> Schedule a new pickup. 	Scan <ul style="list-style-type: none"> Scan new assets. Update existing assets. 	Monitor Pickups <ul style="list-style-type: none"> View existing scheduled pickups.
Tickets <ul style="list-style-type: none"> View existing tickets. Add, edit, or delete tickets. 	Notifications <ul style="list-style-type: none"> View existing notifications. Add, edit, or delete notifications. 	Rooms <ul style="list-style-type: none"> View existing rooms. Add, edit, or delete rooms.
Locations <ul style="list-style-type: none"> View existing locations. Add, edit, or delete locations. 	Users <ul style="list-style-type: none"> View existing users. Add, edit, or delete users. Manage user's accounts. 	Groups <ul style="list-style-type: none"> View existing groups. Add, edit, or delete groups. Manage group accounts.



Revolutionizing Tracking

TekTrack is revolutionizing the way internal tracking is being done. Because your time is valuable, TekTrack was designed to improve the efficiency of your daily tracking activities. With our SmartScan™ technology, package processing has now become even easier. SmartScan™ fully automates barcode scanning and minimizes time and errors during package processing.

Unparalleled Capabilities

TekTrack provides you with unique tracking functionality and an unmatched set of features. It provides a robust web interface that allows you to perform most tracking operations from anywhere within your organization without requiring software installation. To simplify daily operations, users are able to specify preferences for commonly used tracking features. Additionally, TekTrack offers a unique plug-in architecture that allows you to integrate it with any hardware of your choice. For a more detailed list of features, please see the following page.





TekTrack Features

Is your organization looking for a tracking system that is highly scalable with affordable pricing? Utilizes the latest barcode and RFID technologies and still allows for tracking of hand-written packages? Can be accessed from any corporate location without software installation? TekTrack supports all of this and much, much more; a few of the highlights are below:

- Schedule pickup requests with confirmation receipts.
- Allow non-system users to monitor items you specify in your system securely.
- Provides customizable email, text message, HTTP, and other notifications.
- Provides immediate asset, recipient, and location alerts whenever an asset is scanned.
- SmartScan™ technology to simplify and automate barcode scanning and processing.
- Supports electronic signature and unlimited image capturing from mobile devices.
- Supports mobile syncing using ActiveSync technologies or wireless networking.
- Unlimited description fields to capture asset information.
- Export searches and reports in multiple formats (Excel, CSV, XML, etc).
- Browser-based interface, no client software required.
- Robust, efficient interface while working on Windows hand-held devices.
- Build custom delivery manifests to prioritize deliveries.
- Advanced and quick search options; ability to save user-provided criteria for future searches.
- Customize to work with any parcel carrier; identify carriers by barcodes and integrates with carrier tracking systems seamlessly.
- Create custom reports with charts or import pre-designed reports for free from TekCore's library.
- Control network access; define which computers and mobile devices can communicate with the tracking system (and the users allowed from those locations).
- Establish relationships between assets to simplify bulk operations.
- Control access to tracking system functionality with user and group level permissions.
- Provides encrypted security and client server communications.





System Requirements

Supports 32-bit and 64-bit

Windows XP SP3, Windows Vista, Windows 2003 Server, Windows 2008 Server, Windows 7, Windows 8, Windows Server 2012, Windows 10

2 GHZ processor or higher
2 GB RAM or higher, 4 GB recommended

Browsers supported:

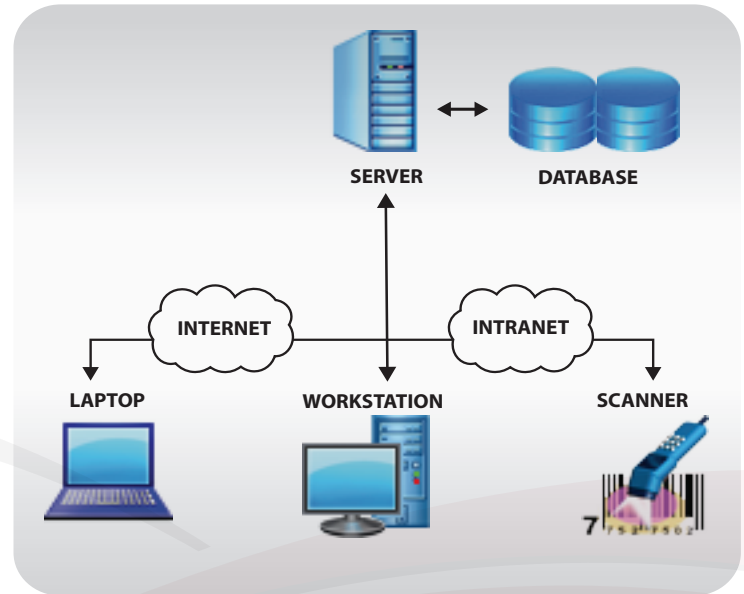
Internet Explorer 9.0 or higher, Firefox 43.0 or higher, Chrome 43.0 or higher, and Safari 5.0 or higher

Mobiles supported:

Mobile devices running Windows Mobile 6.0 or higher

Databases supported:

MS SQL Server 2005 or higher



4157 Mountain Road
Pasadena, MD 21122
Phone: (877) 536-0123
Fax: (443) 514-0059
sales@tekcore.com
www.tekcore.com

Contact us today to
view a demonstration
or to learn how
TekTrack® can help
grow your business.

